

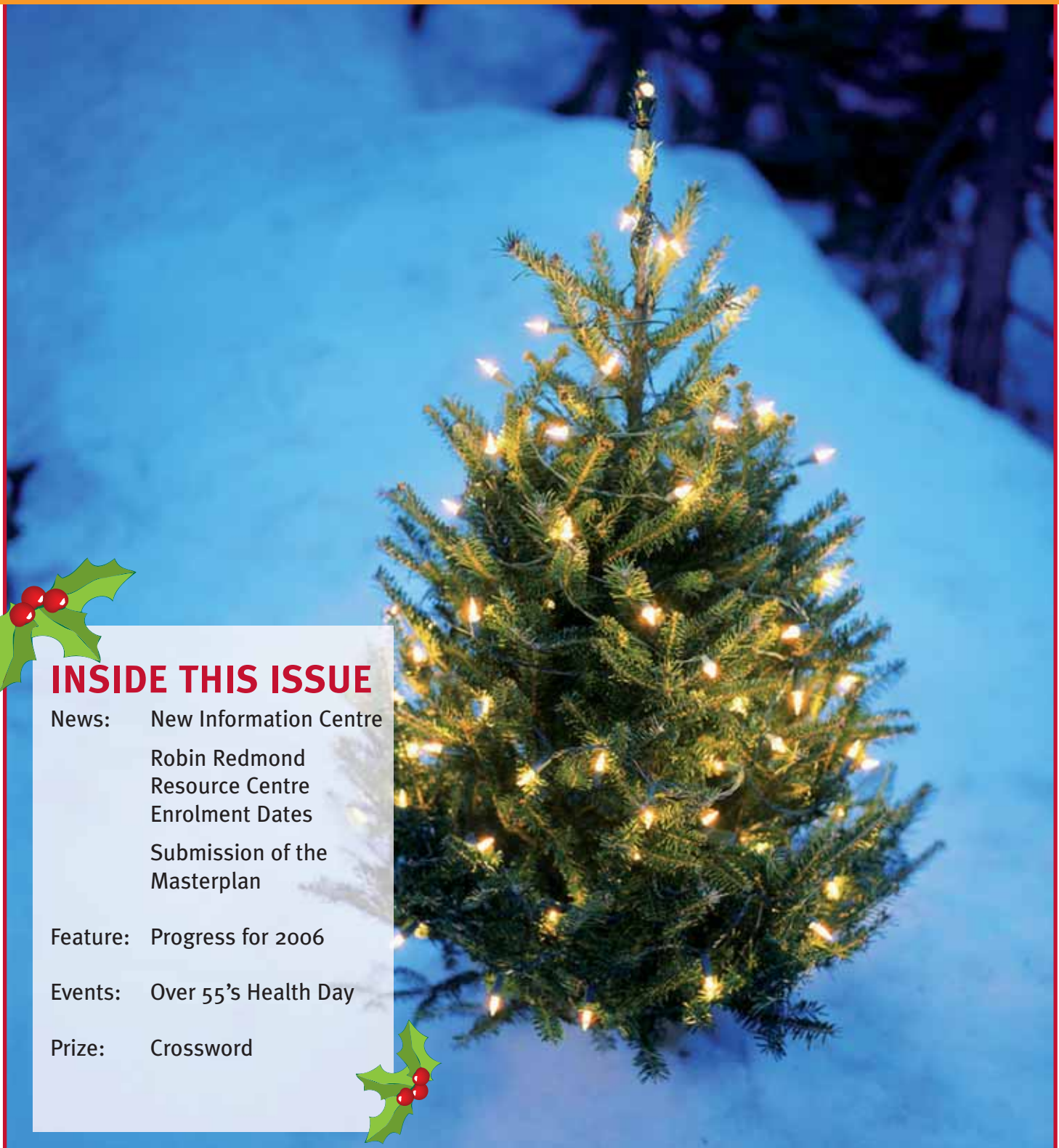
Woodberry Down

Regeneration News



Issue 17 • December 2006

Season's Greetings from the Regeneration Team



INSIDE THIS ISSUE

- News: New Information Centre
Robin Redmond
Resource Centre
Enrolment Dates
Submission of the
Masterplan
- Feature: Progress for 2006
- Events: Over 55's Health Day
- Prize: Crossword
- 

NEWS

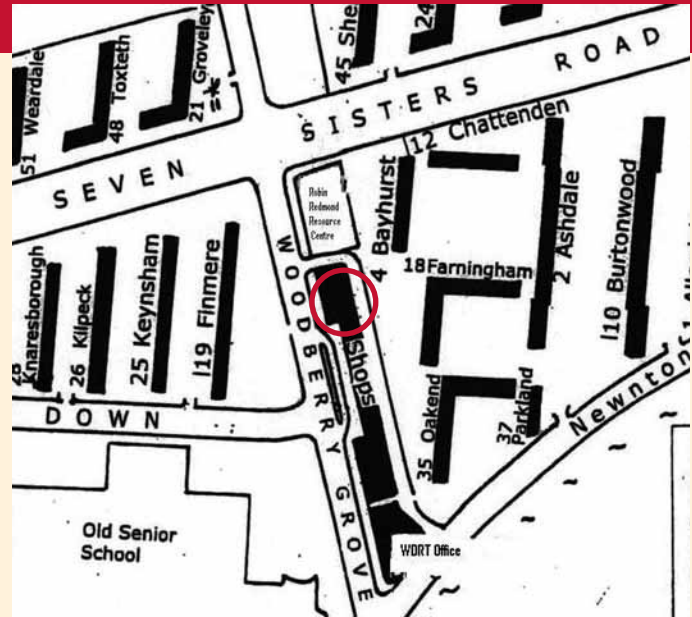


WOODBERRY DOWN REDEVELOPMENT INFORMATION CENTRE 95 WOODBERRY GROVE N4 2SB

The New Year will see the opening of a new Information Centre by Berkeley Homes. This will provide a shop front where residents and the public can find out about the first phase of the redevelopment.

The Information Centre's first priority is to include displays of the planning applications for the Masterplan and the Old School Site. The centre will also provide a venue for exhibitions about the scheme, consultation workshops, meetings and office facilities for the Project Team.

The Information Centre will have representatives from Berkeley Homes, Circle Anglia and the Regeneration Team available informally or by appointment, depending on the demand.



The details of the opening hours will be confirmed in the New Year and if there are any questions prior to this please contact the Regeneration Team on freephone 0800 694 2109.

ROBIN REDMOND RESOURCE CENTRE

Courses starting in January 2007

Courses	Enrolment Date/Time
Beginners' Computer Course, Numeracy Course	Thursday 4th January 10am – 1pm
Literacy Course Numeracy Course	Tuesday 9th January 10am – 1pm
Local History Course	Wednesday 17th January 10am

If you require any further information please contact the RRRRC on 020 8802 7580

OVER 55'S HEALTHY DAY

On the 25th January 2007, In-shape, Sharp End and Woodberry Down Regeneration Team have joined to host the Over 55's Healthy Day at St Olaves Church.

There will be a variety of activities and information on offer, such as yoga, tai-chi, reiki, healthy eating options, a blood pressure clinic and many others. There will be representatives from the local Age Concern and also police teams and street wardens there to give crime prevention advice.

The event will run from 12 noon – 4pm and refreshments will be provided. We look forward to seeing you there.

If you would like further information on the day, please contact Meg Page at the Regeneration Office on freephone 0800 694 2109.

NEWS



SUBMISSION OF THE MASTERPLAN

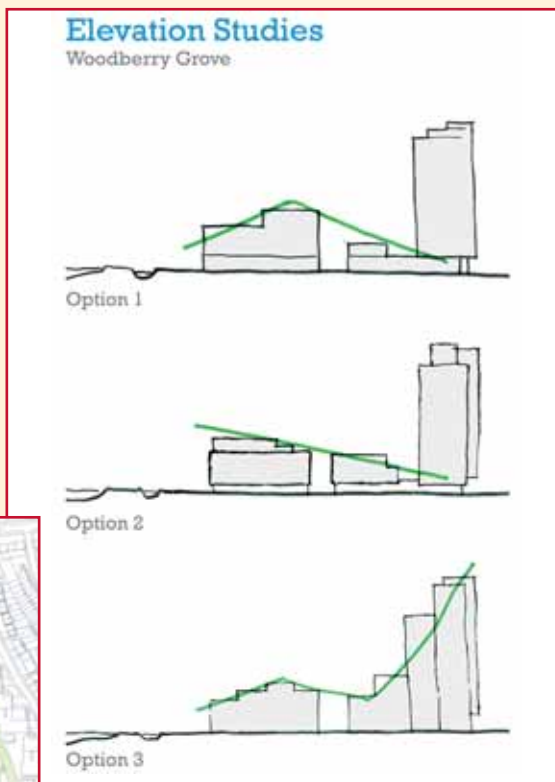
In December, the Masterplan is due for submission to the Borough's Planning Department as part of an outline planning application for the redevelopment of Woodberry Down, providing a huge stepping stone for the project.

During the last year detailed work has been carried out to test, refine and develop a robust Masterplan which will guide future development. Sheppard Epstein Hunter and Matrix Partnership have led this exercise on behalf of the Council, supported by BWA (building economists) and Scott Wilson (environmental specialists, planners and engineers), forming a strong and very experienced professional team.

The Masterplan sets out a number of key principles that outline and direct the future development of Woodberry Down, including building layout and height, play areas, land use, community facilities, roads and traffic, car parks, cycle routes, pedestrian crossings, energy production, environmental and socio-economic assessment, and open spaces, just to name a few.

If residents would like any other information on the Masterplan they are welcome to visit the new Woodberry Down Redevelopment Information Centre (page 2) or contact the Regeneration Team on freephone 0800 694 2109.

Just a few weeks ago the Project Team presented the key elements of the Masterplan to the Mayor of London, Ken Livingstone. The Mayor's response was very positive and he fully supports the project. A definite plus for the residents of Woodberry Down and a boost for the Project Team.



So what does this mean now?
 Once the Masterplan has been submitted to the planning department, Berkeley Homes will then submit a detailed planning application for the Old School Site. This will be a major step towards the start of on-site development.

FEATURE



PROGRESS FOR 2006

Decant & Demolition

This year the Decant Team have been rehousing many residents on Phase 1 of the Kick Start sites. The Team have been rehousing residents back onto Woodberry Down and the Hackney Borough for the past two years, and the table below highlights the progress.

Glynn House located to the east between Selwood House and Hanover Shelter, known as an eye sore on Woodberry Down, was also demolished in November.

Phase 1 of Kick Start	Original no. of Units	Tenants remaining	Leaseholders remaining
Woodberry Grove North	175	Nearly all have accepted & signed new homes	5 in negotiations
Parkfield, Oakend, Glynn House, Newton Close	88	8	7
Horston & Sherwood Houses	70	24	14

The first visual redevelopment on Woodberry Down started this year with the demolition of Woodberry Grove North - Ombersley, Whittlebury, Bewdley, and Bowland Houses .

The New Year will see the continuation of rehousing residents on Phase 1 of the Kick Start sites, as the area is preparing for redevelopment.



FEATURE

PROGRESS FOR 2006

Consultation

The Consultation Team has been out in force this year delivering information through a variety of consultation and communication methods.

In February, a two week Roadshow was held updating residents on the progress of the project, the phasing plans, and displaying the Masterplan model. In April and May many residents attended the Resident Site Visits where they were able to view the standard and quality of developments built by Berkeley Homes (chosen developer for Phase 1 of the Kick Start sites).

In addition to these events the Communication and Consultation Team produce a monthly newsletter, information notices, conduct workshops, focus groups, and youth projects to allow residents to express their opinion on the project.



On Saturday the 17th of June over 500 residents attended the Community Fun Day held at Rowley Gardens. The day had plenty of activity and information available for residents with a presence from the Regeneration Team, Berkeley Homes, Circle Anglia and a number of community information stands.



All of these events provide residents with the opportunity to discuss their concerns with members of the Decant, Consultation and Project Team who were present.

The Regeneration Project on Woodberry Down is a long and demanding development. All care is being taken in developing the area into a sustainable and safe community that will support future generations to come.



NEWS

HOT OFF THE PRESS: From the 1st of April 2007, new management contractor Pinnacle will replace Pathmeads. More information on this changeover will be available in next month's issue.

REPORT UPDATE:

The December Cabinet report is available on the Woodberry Down Website in the News & Updates section. The report is also available on the Hackney Homes and Hackney Council website.

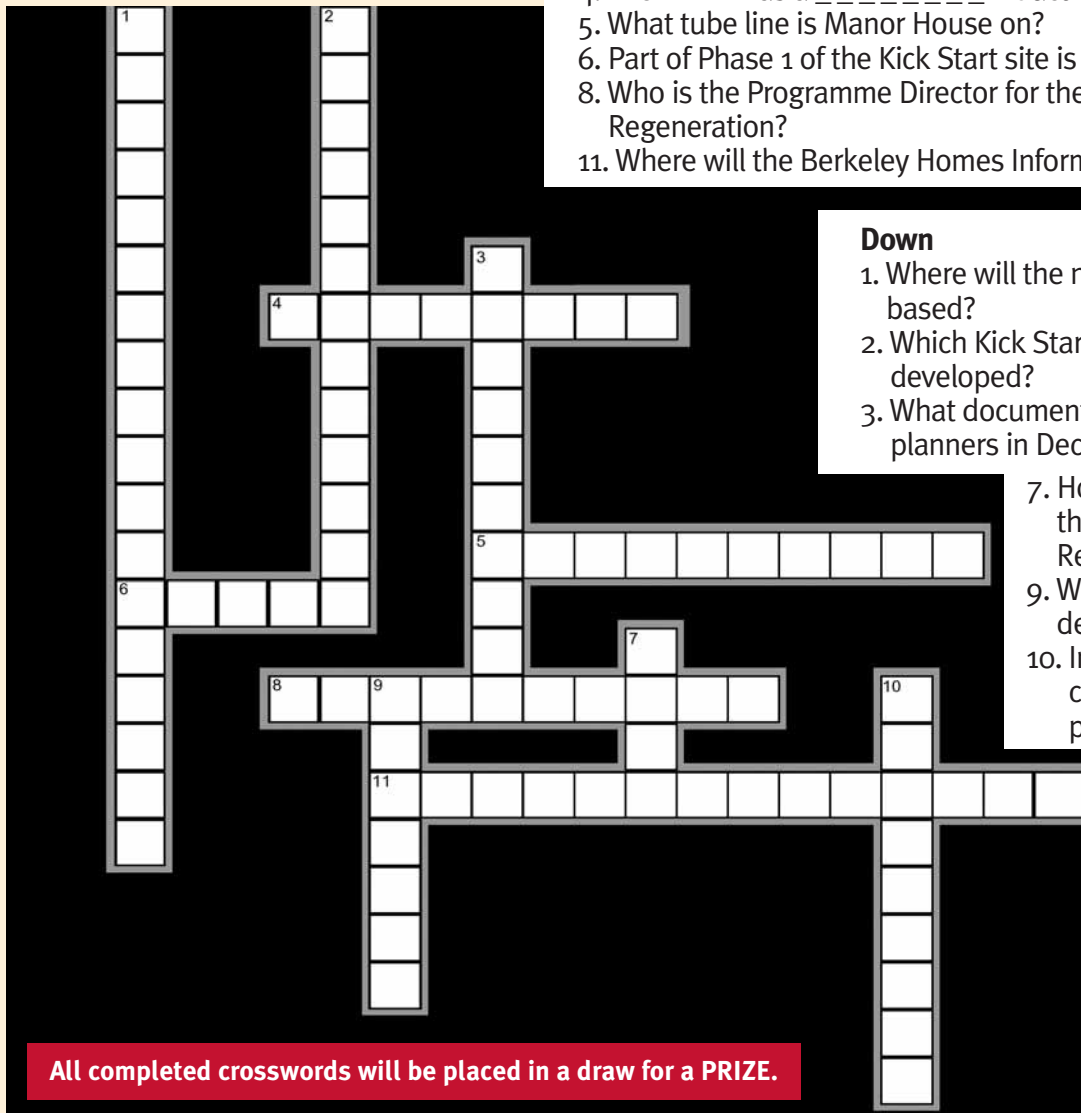
LISTEN:

The Regeneration Team has a portable INDUCTION LOOP available for any hearing impaired residents. Please inform us if required



PUT YOUR CHRISTMAS THINKING CAP ON

CROSSWORD TIME



Across

4. The WDRT has a _____ Induction Loop.
5. What tube line is Manor House on?
6. Part of Phase 1 of the Kick Start site is Newnton _____.
8. Who is the Programme Director for the Woodberry Down Regeneration?
11. Where will the Berkeley Homes Information Centre open?

Down

1. Where will the new library service be based?
2. Which Kick Start site will be the first to be developed?
3. What document will be submitted to the planners in December?
7. How many phases are in the Woodberry Down Regeneration?
9. What is the next block to be demolished?
10. In which block will the construction training take place?

Please complete this crossword and send freepost (address on back page) to the Regeneration Office by 12.01.07.

All completed crosswords will be placed in a draw for a PRIZE.



TRANSLATIONS



If you would like this important information about changes happening to the Woodberry Down estate please tick the box and put your name, address and telephone number below and return this form to the Freepost address given.

উভবেরি ডাউন এস্টেটে যেসব পরিবর্তন সাধিত হচ্ছে সে বিষয়গুলির উপরে এই গুরুত্বপূর্ণ তথ্য যদি পেতে চান তাহলে অনুগ্রহ করে এই বাক্সে টিক দিন এবং আপনার নাম, ঠিকানা ও টেলিফোন নম্বর নিচে লিখুন এবং এই ফর্মটি সরবরাহ করা ফ্রীপোস্ট (ডাক টিকেট লাগবে না) ঠিকানায় ফেরৎ পাঠান। (Bengali)

若你希望取得這份有關Woodberry Down 屋村作出改變的重要資料，請在空格 一剔，在下方填上你的姓名、地址和電話號碼，然後把表格寄交所提供的免付郵資地址。(Chinese)

ખે તમારે Woodberry Down એસ્ટેટમાં થઈ રહેલ પરિવર્તન વિષેની આ અગત્યની માહિતી ખેઈતી હોય તો આ ધાનામાં ટિક્કવું થિએલ કરો, તમારો નામ, સરનામું તથા તમારો ફોન નંબર નીચે લખો અને આ ફોર્મ આપેલ ફ્રીપોસ્ટ સરનામા પર પરત મોકલો. (Gujarati)

ਜੇ ਤੁਸੀਂ Woodberry Down ਐਸਟੇਟ ਵਿਚ ਹੋ ਰਹੀਆਂ ਤਬਦੀਲੀਆਂ ਬਾਰੇ ਇਹ ਮਹੱਤਵਪੂਰਣ ਜਾਣਕਾਰੀ ਚਾਹੁੰਦੇ ਹੋ, ਤਾਂ ਕਿਰਪਾ ਕਰਕੇ ਬਕਸ 'ਤੇ ਨਿਸ਼ਾਨ ਲਗਾਓ ਅਤੇ ਹੇਠਾਂ ਆਪਣਾ ਨਾਂ, ਪਤਾ ਅਤੇ ਫੋਨ ਨੰਬਰ ਲਿਖੋ ਅਤੇ ਇਸ ਫਾਰਮ ਨੂੰ ਹੇਠਾਂ ਦਿੱਤੇ ਗਏ ਫ੍ਰੀਪੋਸਟ ਪਤੇ 'ਤੇ ਵਾਪਸ ਭੇਜੋ। (Punjabi)

Nếu bạn muốn những thông tin quan trọng này về những thay đổi xảy đến với khu vực Woodberry Down xin hãy đánh dấu vào hộp này và điền tên, địa chỉ và số điện thoại vào dưới đây và gửi lại đơn này tới địa chỉ miễn phí đã ghi. (Vietnamese)

إذا أردت تلقي هذه المعلومات الهامة بخصوص التغييرات الحاصلة في عقارات Woodberry Down ، فالرجاء وضع علامة الصحیح في المربع وذكر اسمك وعنوانك ورقم تليفونك فيما أدناه وإعادة هذه الاستمارة إلى العنوان المذكور مجتاً. (Arabic)

Αν θέλετε αυτή η σημαντική πληροφορία σχετικά με τις αλλαγές που γίνονται στο κτήμα Woodberry Down παρακαλώ σημειωθείτε στο κουτί και γράψτε το όνομα, η διεύθυνση και το τηλέφωνό σας κάτω και γυρίστε αυτό το έντυπο στη γραμμένη διεύθυνση του Freepost (Greek)

Si vous souhaitez recevoir les informations importantes sur les changements se produisant au lotissement de Woodberry Down, veuillez cocher la case et inscrire vos nom, adresse et numéro de téléphone ci-dessous et nous retourner ce formulaire à l'adresse postale gratuite indiquée. (French)

Haddaad rabtid warbixintaan muhiimka ah oo ku saabsan isbeddelka ka dhacaayo xaafadda Woodberry Down fadlan calaamadee bokiska hoosna ugu qor magacaaga, cinwaankaaga iyo lambarka taleefankaaga si fasiix ah una soo celi cinwaanka lagu siiyay ee Boostada lacag la'aanta. (Somali)

Si desea recibir información importante acerca de los cambios que se están produciendo en la zona de Woodberry Down, marque la casilla y escriba su nombre, dirección y número de teléfono más abajo y envíe este formulario de manera gratuita a la dirección indicada. (Spanish)

Woodberry Down sitesindeki değişiklikler hakkındaki bu önemli bilgileri edinmek istiyorsanız, kutuyu işaretleyin, kutunun altına adınızı, adresinizi ve telefon numaranızı yazın, daha sonra da bu belgeyi aşağıdaki adrese ücretsiz olarak postalayın. (Turkish)

اگر Woodberry Down تعلقہ میں ہونے والی تبدیلیوں کے بارے میں یہ اہم معلومات چاہتے تو براہ کرم اس خانے میں نشان لگائیں اور نیچے اپنا نام، پتہ اور ٹیلیفون نمبر لکھیں اور دئے ہوئے مفت ڈاک پتے پر یہ فارم واپس کریں۔ (Urdu)

See below for Freepost Address.

Name: _____
 Address: _____
 Telephone: _____

If you would like this publication in any of the following formats, please complete and send to the freepost address on the right:

- In Large Print In Braille
 On Disk On audio Tape

FREEPOST RLST-SUUI-UBSE
Hackney Housing Service
Woodberry Down Regeneration Team
151 Woodberry Grove
LONDON N4 2SB

Please contact a member of the Communication and Consultation Team with any ideas about this publication or if you would like any information about the regeneration of Woodberry Down. Please let us have your address for information.

Alternatively you can write to the **FREEPOST** address, call us on tel: 0800 694 2109 or email: wdrthackneyhomes.org.uk

CONTACTS BOX	Woodberry Down Communication and Consultation Team		Rehousing Team	
	Amanda Murrell (Manager)	020 8356 1670	Colin Bright (Manager)	020 8356 1675
	amanda.murrell@hackneyhomes.org.uk		colin.bright@hackneyhomes.org.uk	
	Eduardo Sequeira de Araujo	020 8356 1671	Madeline Antwi	020 8356 1679
	eduardo.sequeiradearaujo@hackneyhomes.org.uk		madeline.antwi@hackneyhomes.org.uk	
	Meg Page	020 8356 1674	Rudi Ellis	020 8356 1672
meg.page@hackneyhomes.org.uk		rudi.ellis@hackneyhomes.org.uk		
Yahya Hafesji	020 8356 1678	Francis Kwarteng	020 8356 1673	
yahya.hafesji@hackneyhomes.org.uk		francis.kwarteng@hackneyhomes.org.uk		
Fiona Overell	020 8356 1707			
fiona.overell@hackneyhomes.org.uk				

Alternatively, if you need to speak to any member of the Woodberry Down Regeneration Team, you can visit the office at 151 Woodberry Grove, Monday to Friday between the hours of 10.00 and 16.00.

